

Springer Reference

LIVE 

Encyclopedia of
Mathematical
Geosciences



Near Surface Geophysics

ISSN 0892-0644 (online)

Volume 20 · Number 5 · October 2022

445 Surface deployment of DAS systems: Coupling strategies and comparisons to geophone data
N. Harmon, C.A. Rychert, J. Davis, G. Branbilla, W. Bulfer, B. Chichester, Y. Dai, P. Bogiatzic, J. Srook, L. von Patten and A. Maszoudi

478 Characterization of gas-bearing sediments in the coastal environment using geophysical and geotechnical data
J. Dussat, P. Tariis, M. Fabre, B. Marsset, G. Jout, A. Ehrhold, V. Riboulet and A. Baltzer

494 Full-waveform inversion of surface waves based on instantaneous phase coherency
M. Tohti, J. Liu, W. Xiao, Y. Wang, Q. Di and K. Zhou

507 Diffraction pattern recognition using deep semantic segmentation
M. Markovic, R. Malehmir and A. Malehmir

519 The effects of receiver arrangement on velocity analysis with multi-concurrent receiver GPR data
D. Angelis, C. Warren, N. Dianantli, J. Martin and A.P. Annan

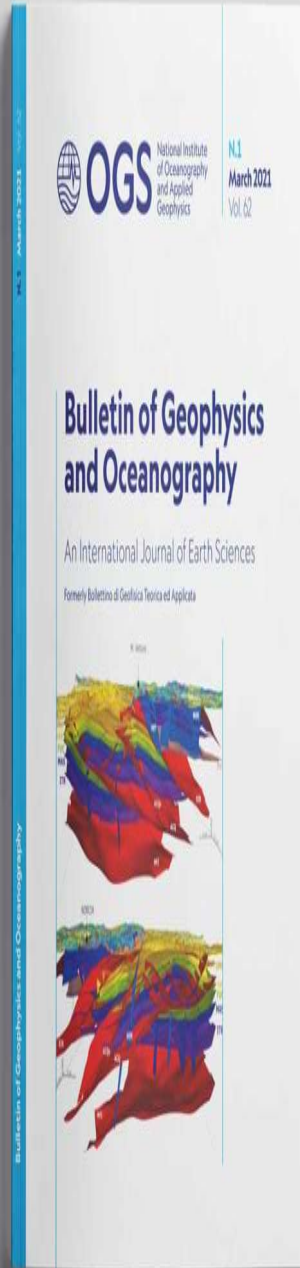
531 Site characterization study with microtremor data: A case study at the West Dornes NPP potential site
T.A. Ryanto, E.R. Iswanto, Sunarto, S. Suryanto, H. Sutoko, Yuliantati and H. Soeladi

544 Mapping the near-surface trace of the seismically active Kachchi Mahland Fault and its lateral extension in the blind zone, Western India
D.M. Maurya, V. Chowksey, M.A. Shaikh, A.K. Palidar, A. Padmajal and L.S. Chanyal

EAGE

EUROPEAN
ASSOCIATION OF
GEOSCIENTISTS &
ENGINEERS

WILEY



OGS National Institute of Oceanography and Applied Geophysics

NLJ March 2021 Vol. 62

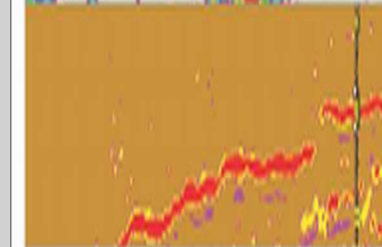
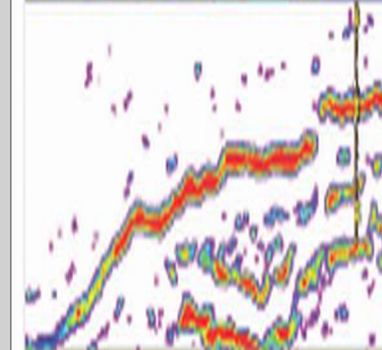
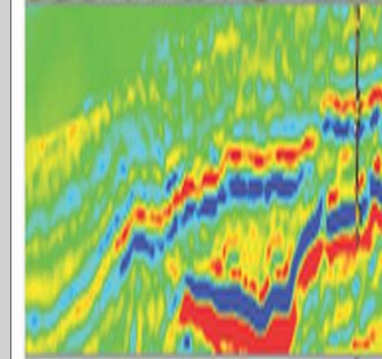
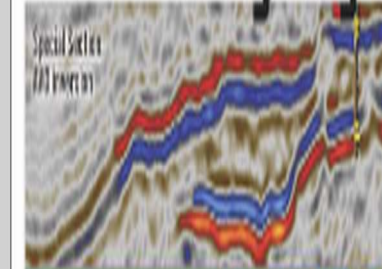
Bulletin of Geophysics and Oceanography

An International Journal of Earth Sciences

Formerly Bollettino di Geofisica Teorica ed Applicata



The Leading Edge



Volume 39 · Number 1 · February 2022



Volume 197, January 2023

ISSN 1469-343X

JOURNAL OF
AFRICAN
EARTH
SCIENCES



Editor-in-Chief

MUHAMMAD ABDELSALAM
Oklahoma State University, USA

DAMIEN DELVAUX
Royal Museum for Central Africa, Belgium

READ BROWN MAPEO
University of Botswana, Botswana



Springer Reference

LIVE ↓

Encyclopedia of
Mathematical
Geosciences



Near Surface Geophysics

ISSN 0892-0644 (online)

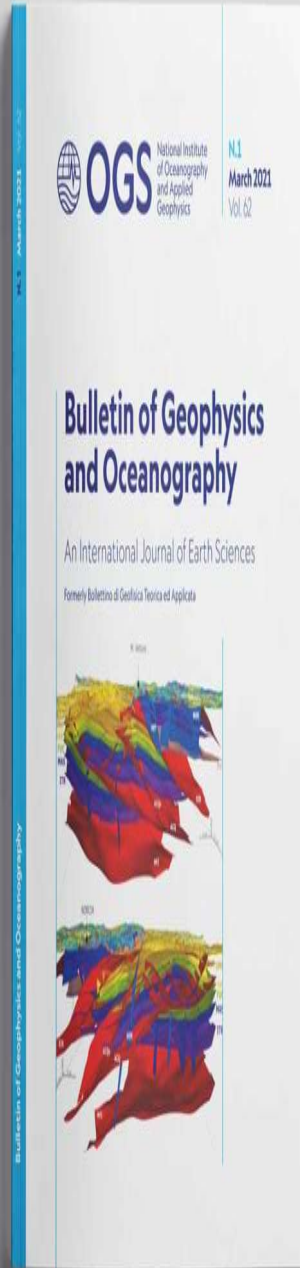
Volume 20 · Number 5 · October 2022

- 445 Surface deployment of DAS systems: Coupling strategies and comparisons to geophone data
N. Harmon, C.A. Rychert, J. Davis, G. Branbilla, W. Bulfer, B. Chichester, Y. Dai, P. Bogiatzic, J. Srook, L. von Patten and A. Maszoudi
- 478 Characterization of gas-bearing sediments in the coastal environment using geophysical and geotechnical data
J. Dusar, P. Tariq, M. Fabre, B. Marsset, G. Jout, A. Ehrhold, V. Riboulet and A. Baltzer
- 494 Full-waveform inversion of surface waves based on instantaneous phase coherency
M. Tohti, J. Liu, W. Xiao, Y. Wang, Q. Di and K. Zhou
- 507 Diffraction pattern recognition using deep semantic segmentation
M. Markovic, R. Malehmir and A. Malehmir
- 519 The effects of receiver arrangement on velocity analysis with multi-concurrent receiver GPR data
D. Angelis, C. Warren, N. Dianantli, J. Martin and A.P. Annan
- 531 Site characterization study with microtremor data: A case study at the West Dornes NPP potential site
T.A. Ryanto, E.R. Iswanto, Sunarto, S. Suryanto, H. Sutoko, Yuliaslali and H. Soelali
- 544 Mapping the near-surface trace of the seismically active Kachchh Mainland Fault and its lateral extension in the blind zone, Western India
D.M. Maurya, V. Chowksey, M.A. Shaikh, A.K. Palidar, A. Padmalal and L.S. Chanyal

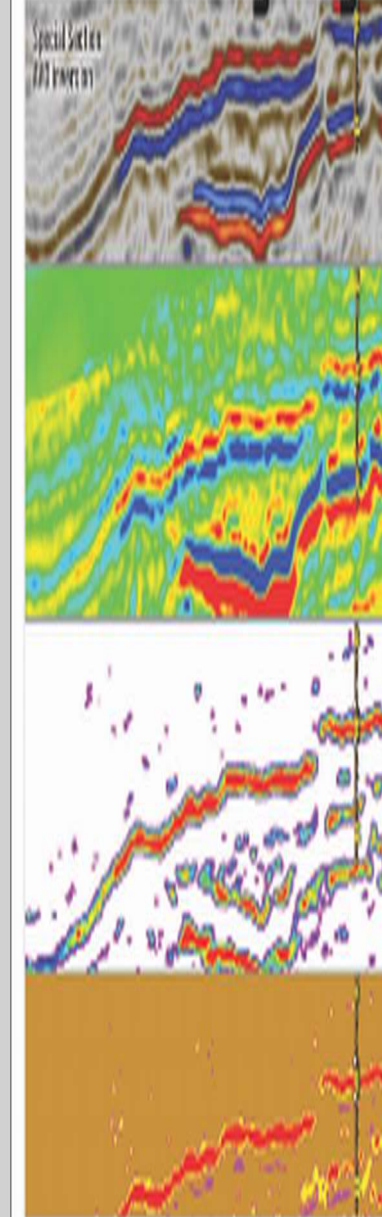
EAGE

EUROPEAN
ASSOCIATION OF
GEOSCIENTISTS &
ENGINEERS

WILEY



The Leading Edge™



Volume 41 · Number 1 · February 2022



Volume 197, January 2023

ISSN 1464-343X

JOURNAL OF
AFRICAN
EARTH
SCIENCES



Editor-in-Chief

MUHAMMAD ABDELSALAM
Oklahoma State University, USA

DAMIEN DELVAUX
Royal Museum for Central Africa, Belgium

READ BROWN MAPEO
University of Botswana, Botswana

